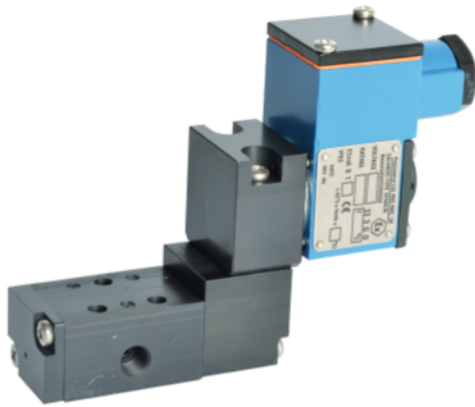


E13 Remote Mount Series, 1/8", 3/2 Function Solenoid Valve



Valve Assembly illustrated with an Exd coil for reference only.

DESCRIPTION

3 port 2 position, pilot operated solenoid valve.

- Hazardous area approved pilot operators
 - Ex nA, Ex e mb, Ex d & Ex ia
- Various international approvals
 - ATEX, IECEx, FM/CSA & UKCA
- Body material available in
 - Aluminium (standard), Stainless steel & Brass
- Seal kit available - VSK100

FEATURES

- External or internal pilot air connection
- Interchangeable coils, including various hazardous area options
- Single coil spring return function or double coil stay put function
- Convenient fixing holes to enable bracket mounting
- Pilot exhaust dust caps fitted as standard
- SIL 2 capable (De-energise to trip @ HFT=0), SIL 3 Capable (De-energise to trip @ HFT=1) (5/2 Only)
- Our manual override options are **NOT** currently covered by SIL Certification

PRODUCT CODE: **E 13**

OPERATOR

OPTION 1
COIL

DESIGNATOR
VOLTAGE **OPTION 2**

SEE BELOW
PRODUCT CODE
DETAILS

Any of the below options that are not required enter "0" in relevant box.

Operator

- 1 8** Spring return, internal pilot air feed
- 8 0** Spring return, external pilot air connection
- 1 9** Double solenoid, internal pilot air feed
- 9 0** Double solenoid, external pilot air connection

Coil

- A** Exia
- B** Terminal Box
- D** Exd
- H** Plug & Socket Exia
- K** MC30 Plug & Socket
- L** MC30 Plug & Socket with LED
- P** Plug & Socket
- S** Exia Stainless Steel Housing
- Y** ExnA Plug & Socket
- 4** Stainless Steel Housing
- 5** ExnA Stainless Steel Housing
- 8** Ex e mb Stainless Steel Housing

Option 1

- C** Lever manual override
- D** Push button manual override
- S** Screw driver override
- 0** No option required

*Not SIL approved with manual override options

Voltage

- B** 24v DC
- H** 24v DC Low Power*(1)
- R** 24v AC (50/60 Hz)
- T** 110v AC (50/60 Hz)
- U** 240v AC (50/60 Hz)

* A comprehensive range of non-standard voltages available on request

Designator

- A** ATEX / IECEx / CCCEX*(2)
- B** ATEX / IECEx / CCCEX (10mA)*(4)
- F** FM / CSA*(3)
- J** ATEX Ex e mb

Note:

- (1) "H" option not available with Exia solenoids
- (2) IECEx & CCCEX only available with Exia and Ex db solenoids
- (3) FM only available in Exia
- (4) Exia Only

Option 2

- B** Valve body brass
- C** Valve body brass and NPT ports
- D** Valve body brass, NPT ports and 1/2" NPT electrical connection
- E** 1/2" NPT electrical connection
- M** NPT ports and 1/2" NPT electrical connection
- N** NPT ports
- P** Valve body stainless steel, NPT ports and 1/2" NPT electrical connection
- R** Valve body stainless steel and NPT ports
- S** Valve body stainless steel

* A comprehensive range of non-standard options available on request

